

**LOVOSA TS20**

**Date of issue: 1.9.2007**

**Date of revision: 04.08.2015, replaces the version of sds from 01.06.2015**

**SECTION 1: IDENTIFICATION OF THE SUBSTANCE/MIXTURE AND OF THE COMPANY/UNDERTAKING**

**1.1 Product identifier:**  
**Trade Name: Lovosa TS20**  
 Other name: KMC technická  
 Mixture description: Mixture of sodium carboxymethylcellulose, sodium carbonate and sodium hydroxide

**1.2 Relevant identified uses of the mixture or mixture and uses advised against:**

**Identified uses:**  
 As a material for further processing. It uses its properties antiredeposition (detergents), stabilizers (dispersions and emulsions), thickening (paints), adhesive and bonding (sizing agents, paper sizing, wallpaper adhesive).

**Uses advised against:**  
 Not known

**1.3 Details of the supplier of the safety data sheet:**  
**Lovochemie, a.s.**  
 Terezínská 57  
 410 02 Lovosice  
 Czech Republic  
 E-mail: info@lovochemie.cz

**1.4 Emergency telephone number:**  
 corporate dispatching 416 563 441, 736 507 221

Toxicology information centre - Toxikologické informační středisko (TIS), Na Bojišti 1, 128 08 Praha 2  
 Tel. (24 h/day - nonstop): +420 2 2491 9293, +420 2 2491 5402

**SECTION 2: HAZARDS IDENTIFICATION**

This product is classified as a dangerous according to Regulation 1272/2008/EC.

**2.1 Classification of the substance or mixture:**

**according to 1272/2008/EC**  
 Skin Irrit. 2; H315  
 Eye Irrit. 2; H319  
 Full text of all classifications and precautionary statements is listed in section 16.

**2.2 Label elements:**

**Hazard pictogram(s):**



**Signal word(s):**  
 Warning

**Components of the mixture to be placed on the label**  
 Not available

**Hazard statement(s):**  
 H315 - Causes skin irritation.  
 H319 - Causes serious eye irritation.

**LOVOSA TS20**

**Precautionary statement(s):**

P280 - Wear protective gloves/protective clothing/eye protection/face protection.  
 P302+P352 - IF ON SKIN: Wash with plenty of water.  
 P305+P351+P338 - IF IN EYES: Rinse cautiously with water for several minutes. Remove contact lenses, if present and easy to do. Continue rinsing.  
 P332+P313 - If skin irritation occurs: Get medical advice/attention.  
 P337+P313 - If eye irritation persists: Get medical advice/attention.

**Additional information on the label:**

Not available

**2.3 Other hazards:**

**The most serious adverse effects on human health when using the substance or mixture:**

Dust is alkaline, irritating the skin, mucous membranes and is dangerous to the eyes.

**The most serious adverse effects on the environment when using the substance or mixture:**

Not known

**The most important adverse physical and chemical effects when using the substance or mixture:**

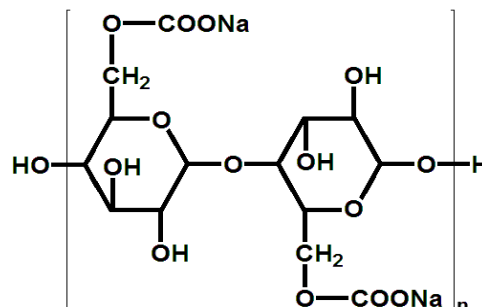
Not known

**SECTION 3: COMPOSITION/INFORMATION ON INGREDIENTS**

**3.2 Mixture:**

**Sodium carboxymethylcellulose**

Concentration: min. 64 %  
 Index number: not yet available  
 CAS number: 9004-32-4  
 ES (EINECS) number: not yet available  
 Registration number: not yet available  
**Classification according to Regulation 1272/2008/EC:**  
 not classified



**Sodium carbonate Na<sub>2</sub>CO<sub>3</sub>**

Concentration: < 3 %  
 Index number: 011-005-00-2  
 CAS number: 497-19-8  
 ES (EINECS) number: 207-838-8  
 Registration number: 01-2119485498-19-XXXX  
**Classification according to Regulation 1272/2008/EC:**  
 Eye Irrit. 2; H319

**Sodium hydroxide NaOH**

Concentration: < 2 %  
 Index number: 011-002-00-6  
 CAS number: 1310-73-2  
 ES (EINECS) number: 215-185-5  
 Registration number: 01-2119457892-27-XXXX  
**Classification according to Regulation 1272/2008/EC:**  
 Met. Corr. 1; H290  
 Skin Corr. 1A; H314  
 Specific concentration limits: C ≥ 5 %: Skin Corr. 1A; H314, 2 % ≤ C < 5 %: Skin Corr. 1B; H314, 0,5 % ≤ C < 2 %: Skin Irrit. 2; H315, 0,5 % ≤ C < 2 %: Eye Irrit. 2; H319

**SECTION 4: FIRST AID MEASURES**

**4.1 Description of first aid measures:**

In the case of health problems, always seek medical advice and show this safety data sheet.

**LOVOSA TS20**

**Inhalation:**

Breake the exposure, transfer the person to the fresh air, apply artificial respiration, if the person is not breathing.

**Skin contact:**

Flush the affected area with plenty of water (preferably lukewarm), carefully remove the contaminated clothing as soon as possible and continue washing the affected skin.

**Eye contact:**

Rinse with plenty of water for at least 15 minutes. Never neutralize! Move to the physician while continue rinsing.

**Ingestion:**

Rinse out mouth with clean water, give 0,2 to 0,5 l water to drink, do not induce vomiting. Do not attempt to neutralize. Immediately call in physician. Never give anything by mouth to an unconscious person.

**4.2 Most important symptoms and effects, both acute and delayed:**

Inhalation: cough, sore throat, shortness of breath

Skin contact: redness

Eye contact: redness, pain, temporary loss of vision capabilities

Ingestion: abdominal pain, diarrhea, nausea, vomiting

**4.3 Indication of any immediate medical attention and special treatment needed:**

Ingestion or contact with eyes, seek medical attention.

**SECTION 5: FIREFIGHTING MEASURES**

**5.1 Extinguishing media:**

**Suitable extinguishing media:**

Water

**Unsuitable extinguishing media:**

Halogen, powder or snow extinguisher

**5.2 Special hazards arising from the substance or mixture:**

Difficult to spread fire

**5.3 Advice for firefighters:**

Avoid inhalation of combustion products.

**SECTION 6: ACCIDENTAL RELEASE MEASURES**

**6.1 Personal precautions, protective equipment and emergency procedures:**

Use appropriate protective clothing, gloves, goggles and respiratory protection.

**6.2 Environmental precautions:**

Not required

**6.3 Methods and material for containment and cleaning up:**

Dispose in a dry way. Waste batch remove according to applicable legislation.

**6.4 Reference to other sections:**

Individual protection measures in section 8.

Disposal considerations in section 13.

**SECTION 7: HANDLING AND STORAGE**

**7.1 Precautions for safe handling:**

When using do not eat, drink or smoke.

**7.2 Conditions for safe storage, including any incompatibilities.**

Store in a dry, covered and clean stores, protected against external weathering and frost, insects and mice. Store at most six layers superimposed bags. Product is packed in laminated paper bags with liner against humidity.

**LOVOSA TS20**

**7.3 Specific end use(s):**  
See section 1.

**SECTION 8: EXPOSURE CONTROLS/PERSONAL PROTECTION**

**8.1 Control parameters:**  
Directive 361/2007/CZ, subsequently amended:

sodium hydroxide  
PEL: 1 mg/m<sup>3</sup>  
NPK-P: 2 mg/m<sup>3</sup>

sodium carbonate  
PEL: 5 mg/m<sup>3</sup>  
NPK-P: 10 mg/m<sup>3</sup>

Product: Not determined - recommended value for dust 6 mg / m<sup>3</sup>

**DNEL and PNEC values:**

sodium carbonate:  
DNEL:  
Workers/Inhalation/Local effects/Long term - 10 mg/m<sup>3</sup>  
General population/Inhalation/Local effects/Long term - 10 mg/m<sup>3</sup>  
PNEC:  
not available

sodium hydroxide:  
DNEL:  
Workers/Inhalation/Local effects/Long term - 1 mg/m<sup>3</sup>  
General population/Inhalation/Local effects/Long term - 1 mg/m<sup>3</sup>  
PNEC:  
not available

**8.2 Exposure controls:**  
The dust concentration in the atmosphere must be kept on as low level as possible by means of properly designed technical tools (local venting, local exhaustion etc.).

**Protection of respirator organs:**

In case of nonobservance of specified concentration limits use respirator against dust.

**Protection of eyes:**

Protective glasses or face shield

**Protection of hands:**

Protective gloves

**Protection of skin:**

Suitable protective clothing, protective shoes

**Further data including the general hygienic measures:**

Do not eat, drink or smoke. After work, wash your hands with warm water and soap. Treat your skin with suitable repairation means.

**SECTION 9: PHYSICAL AND CHEMICAL PROPERTIES**

**9.1 Information on basic physical and chemical properties:**  
Physical state (at 20C and 101,3 kPa): solid  
Colour: light tan  
Odour: odourless  
Odour threshold: odourless  
pH (at 20C) (1% solution): 10-11,5  
Melting point/freezing point: not determined  
Initial boiling point and boiling range: not determined

**LOVOSA TS20**

Flash point: not determined  
 ignition temperature of the dust deposit 300 C, ignition temperature of suspended dust 330 C  
 Flammability: not determined  
 Explosive limits: upper - not determined, lower - 230 g/m<sup>3</sup>  
 Vapour pressure: not determined  
 Vapour density: not determined  
 Relative density (at 20C): 1004 kg/m<sup>3</sup>  
 Solubility in water: forms a gel that further dilution below 10% is dissolved into a viscous solution  
 Partition coefficient (n-octanol/water): not determined  
 Auto-ignition temperature: not determined  
 Decomposition temperature: not determined  
 Viscosity (at 20C): (1% solution) 10 – 20 mPa.s  
 Explosive properties: non explosive  
 Oxidising properties: is not classified as an oxidant

**9.2 Other information:**  
 water content: max. 10 %

**SECTION 10: STABILITY AND REACTIVITY**

- 10.1 Reactivity:**  
Under normal conditions, this mixture is a stable.
- 10.2 Chemical stability:**  
Stable under recommended storage conditions.
- 10.3 Possibility of hazardous reactions:**  
Not known.
- 10.4 Conditions to avoid:**  
Heat, flames and sparks. Extremes of temperature and direct sunlight.
- 10.5 Incompatible materials:**  
Not known.
- 10.6 Hazardous decomposition products:**  
Not known.

**SECTION 11: TOXICOLOGICAL INFORMATION**

- 11.1 Information on toxicological effects:**
  - Acute toxicity:**  
 LD50, oral: > 4 g/kg (rat)  
 LD50 dermal: not given  
 LD50 inhalation: not given
  - Skin corrosion/irritation:**  
 Causes skin irritation
  - Serious eye damage/irritation:**  
 Causes serious eye irritation.
  - Respiratory or skin sensitisation:**  
 No data available
  - Carcinogenicity:**  
 No data available
  - Germ cell mutagenicity:**  
 No data available
  - Reproductive toxicity:**  
 No data available

**LOVOSA TS20**

**Specific target organ toxicity - single exposure:**

No data available

**Specific target organ toxicity - repeated exposure:**

No data available

**Aspiration hazard:**

No data available

**Other information:**

See section 2 and 4.

**SECTION 12: ECOLOGICAL INFORMATION**

12.1

**Toxicity:**

LC<sub>50</sub>, 96 h., fish: not given

EC<sub>50</sub>, 48 hod., daphnia: 5 mg/l

IC<sub>50</sub>, 72 hod., algae: not given

12.2

**Persistence and degradability:**

Not readily biodegradable.

12.3

**Bioaccumulative potential:**

No data given. It is a compound well soluble in water. Bioaccumulation is not expected.

12.4

**Mobility in soil:**

No data available

12.5

**Results of PBT and vPvB assessment:**

Product is neither a PBT nor a vPvB substance

12.6

**Other adverse effects:**

No data available

**SECTION 13: Disposal considerations**

13.1

**Waste treatment methods:**

Dry way for removal.

**Ways of disposal of contaminated packaging:**

Taking back the emptied containers provided under the contract with the producer company EKO-KOM Prague. Contaminated packaging can be removed in a chemical incinerator equipped. Potential EU waste-code 16 03 03\*.

**Other information:**

Substance including packaging, dispose in accordance with local regulations and laws in force.

**SECTION 14: TRANSPORT INFORMATION**

14.1

**UN number:** does not

14.2

**UN proper shipping name:** does not

14.3

**Transport hazard class(es):** does not

14.4

**Packing group:** does not

14.5

**Environmental hazards:**

does not

14.6

**Special precautions for user:**

does not

**LOVOSA TS20**

**14.7**            **Transport in bulk according to Annex II of MARPOL 73/78 and the IBC Code:**  
not available

**SECTION 15: REGULATORY INFORMATION**

**15.1**            **Safety, health and environmental regulations/legislation specific for the substance or mixture:**  
Regulation (EC) No 1907/2006 of the European Parliament and of the Council of 18 December 2006.  
REGULATION (EC) No 1272/2008 OF THE EUROPEAN PARLIAMENT AND OF THE COUNCIL of 16  
December 2008 on classification, labelling and packaging of substances and mixtures, amending and repealing  
Directives 67/548/EEC and 1999/45/EC, and amending Regulation (EC) No 1907/2006.

**15.2**            **Chemical safety assessment:**  
No data available.

**SECTION 16: OTHER INFORMATION**

**In case of a revised safety data sheet, a clear indication of where changes have been made to the previous version of the safety data sheet:**  
First edition.

**Key or legend to abbreviations and acronyms used in the safety data sheet:**

Eye Irrit. 2 - irritating to eyes, category 2  
Met. Corr. 1 - corrosive to metals, category 1  
Skin Corr. 1A - skin corrosion, category 1A  
Skin Corr. 1B - skin corrosion, category 1A  
Skin Irrit. 2 - skin irritant, category 2  
DNEL - Derived No Effect Level  
PNEC - Predicted No Effect Concentration  
PEL - Permissible exposure limit, long term (8h)  
NPK-P - Highest permissible concentration on workplace  
CLP - Regulation No 1272/2008/EC  
REACH - Regulation No 1907/2006/EC  
PBT - Persistent, bio-accumulative and toxic substance  
vPvB - Very persistent and very bio-accumulative substance

**Sources of key data used to compile the Safety Data Sheet:**

Data from safety data sheets, literature, national and European legislation, database MedisAlarm and the experience of man.

**List of hazard statements and precautionary statements:**

H290 - May be corrosive to metals  
H314 - Causes severe skin burns and eye damage  
H315 - Causes skin irritation  
H319 - Causes serious eye irritation  
P280 - Wear protective gloves/protective clothing/eye protection/face protection.  
P302+P352 - IF ON SKIN: Wash with plenty of water.  
P305+P351+P338 - IF IN EYES: Rinse cautiously with water for several minutes. Remove contact lenses, if present and easy to do. Continue rinsing.  
P332+P313 - If skin irritation occurs: Get medical advice/attention.  
P337+P313 - If eye irritation persists: Get medical advice/attention.

**Training advice :**

According to MSDS.

**Other information:**

The information in this MSDS was obtained from sources, which we believe are reliable. However, the information is provided without any warranty, express or implied, regarding its correctness. The conditions or methods of handling, storage, use or disposal of the product are beyond our control and may be beyond our knowledge. For this and other reasons, we do not assume responsibility and expressly disclaim liability for loss, damage or expense arising out of or in any way connected with the handling, storage, use or disposal of the product. This MSDS was prepared and is to be used only for this product. If the product is used as a component in another product, this MSDS information may not be applicable.