

LOVOSA TS20

Date of issue: 1.9.2007

Date of revision: 04.08.2015, replaces the version of sds from 01.06.2015

SECTION 1: IDENTIFICATION OF THE SUBSTANCE/MIXTURE AND OF THE COMPANY/UNDERTAKING

1.1 Product identifier:
Trade Name: Lovosa TS20
 Other name: KMC technická
 Mixture description: Mixture of sodium carboxymethylcellulose, sodium carbonate and sodium hydroxide

1.2 Relevant identified uses of the mixture or mixture and uses advised against:

Identified uses:
 As a material for further processing. It uses its properties antiredeposition (detergents), stabilizers (dispersions and emulsions), thickening (paints), adhesive and bonding (sizing agents, paper sizing, wallpaper adhesive).

Uses advised against:
 Not known

1.3 Details of the supplier of the safety data sheet:
Lovochemie, a.s.
 Terezínská 57
 410 02 Lovosice
 Czech Republic
 E-mail: info@lovochemie.cz

1.4 Emergency telephone number:
 corporate dispatching 416 563 441, 736 507 221

Toxicology information centre - Toxikologické informační středisko (TIS), Na Bojišti 1, 128 08 Praha 2
 Tel. (24 h/day - nonstop): +420 2 2491 9293, +420 2 2491 5402

SECTION 2: HAZARDS IDENTIFICATION

This product is classified as a dangerous according to Regulation 1272/2008/EC.

2.1 Classification of the substance or mixture:

according to 1272/2008/EC
 Skin Irrit. 2; H315
 Eye Irrit. 2; H319
 Full text of all classifications and precautionary statements is listed in section 16.

2.2 Label elements:

Hazard pictogram(s):



Signal word(s):
 Warning

Components of the mixture to be placed on the label
 Not available

Hazard statement(s):
 H315 - Causes skin irritation.
 H319 - Causes serious eye irritation.

LOVOSA TS20

Precautionary statement(s):

P280 - Wear protective gloves/protective clothing/eye protection/face protection.
 P302+P352 - IF ON SKIN: Wash with plenty of water.
 P305+P351+P338 - IF IN EYES: Rinse cautiously with water for several minutes. Remove contact lenses, if present and easy to do. Continue rinsing.
 P332+P313 - If skin irritation occurs: Get medical advice/attention.
 P337+P313 - If eye irritation persists: Get medical advice/attention.

Additional information on the label:

Not available

2.3 Other hazards:

The most serious adverse effects on human health when using the substance or mixture:

Dust is alkaline, irritating the skin, mucous membranes and is dangerous to the eyes.

The most serious adverse effects on the environment when using the substance or mixture:

Not known

The most important adverse physical and chemical effects when using the substance or mixture:

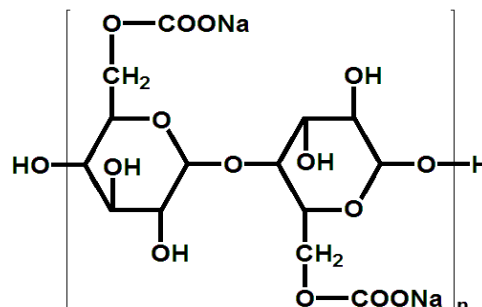
Not known

SECTION 3: COMPOSITION/INFORMATION ON INGREDIENTS

3.2 Mixture:

Sodium carboxymethylcellulose

Concentration: min. 64 %
 Index number: not yet available
 CAS number: 9004-32-4
 ES (EINECS) number: not yet available
 Registration number: not yet available
Classification according to Regulation 1272/2008/EC:
 not classified



Sodium carbonate Na₂CO₃

Concentration: < 3 %
 Index number: 011-005-00-2
 CAS number: 497-19-8
 ES (EINECS) number: 207-838-8
 Registration number: 01-2119485498-19-XXXX
Classification according to Regulation 1272/2008/EC:
 Eye Irrit. 2; H319

Sodium hydroxide NaOH

Concentration: < 2 %
 Index number: 011-002-00-6
 CAS number: 1310-73-2
 ES (EINECS) number: 215-185-5
 Registration number: 01-2119457892-27-XXXX
Classification according to Regulation 1272/2008/EC:
 Met. Corr. 1; H290
 Skin Corr. 1A; H314
 Specific concentration limits: C ≥ 5 %: Skin Corr. 1A; H314, 2 % ≤ C < 5 %: Skin Corr. 1B; H314, 0,5 % ≤ C < 2 %: Skin Irrit. 2; H315, 0,5 % ≤ C < 2 %: Eye Irrit. 2; H319

SECTION 4: FIRST AID MEASURES

4.1 Description of first aid measures:

In the case of health problems, always seek medical advice and show this safety data sheet.

LOVOSA TS20

Inhalation:

Breake the exposure, transfer the person to the fresh air, apply artificial respiration, if the person is not breathing.

Skin contact:

Flush the affected area with plenty of water (preferably lukewarm), carefully remove the contaminated clothing as soon as possible and continue washing the affected skin.

Eye contact:

Rinse with plenty of water for at least 15 minutes. Never neutralize! Move to the physician while continue rinsing.

Ingestion:

Rinse out mouth with clean water, give 0,2 to 0,5 l water to drink, do not induce vomiting. Do not attempt to neutralize. Immediately call in physician. Never give anything by mouth to an unconscious person.

4.2 Most important symptoms and effects, both acute and delayed:

Inhalation: cough, sore throat, shortness of breath

Skin contact: redness

Eye contact: redness, pain, temporary loss of vision capabilities

Ingestion: abdominal pain, diarrhea, nausea, vomiting

4.3 Indication of any immediate medical attention and special treatment needed:

Ingestion or contact with eyes, seek medical attention.

SECTION 5: FIREFIGHTING MEASURES

5.1 Extinguishing media:

Suitable extinguishing media:

Water

Unsuitable extinguishing media:

Halogen, powder or snow extinguisher

5.2 Special hazards arising from the substance or mixture:

Difficult to spread fire

5.3 Advice for firefighters:

Avoid inhalation of combustion products.

SECTION 6: ACCIDENTAL RELEASE MEASURES

6.1 Personal precautions, protective equipment and emergency procedures:

Use appropriate protective clothing, gloves, goggles and respiratory protection.

6.2 Environmental precautions:

Not required

6.3 Methods and material for containment and cleaning up:

Dispose in a dry way. Waste batch remove according to applicable legislation.

6.4 Reference to other sections:

Individual protection measures in section 8.

Disposal considerations in section 13.

SECTION 7: HANDLING AND STORAGE

7.1 Precautions for safe handling:

When using do not eat, drink or smoke.

7.2 Conditions for safe storage, including any incompatibilities.

Store in a dry, covered and clean stores, protected against external weathering and frost, insects and mice. Store at most six layers superimposed bags. Product is packed in laminated paper bags with liner against humidity.

LOVOSA TS20

7.3 Specific end use(s):
See section 1.

SECTION 8: EXPOSURE CONTROLS/PERSONAL PROTECTION

8.1 Control parameters:
Directive 361/2007/CZ, subsequently amended:

sodium hydroxide
PEL: 1 mg/m³
NPK-P: 2 mg/m³

sodium carbonate
PEL: 5 mg/m³
NPK-P: 10 mg/m³

Product: Not determined - recommended value for dust 6 mg / m³

DNEL and PNEC values:

sodium carbonate:
DNEL:
Workers/Inhalation/Local effects/Long term - 10 mg/m³
General population/Inhalation/Local effects/Long term - 10 mg/m³
PNEC:
not available

sodium hydroxide:
DNEL:
Workers/Inhalation/Local effects/Long term - 1 mg/m³
General population/Inhalation/Local effects/Long term - 1 mg/m³
PNEC:
not available

8.2 Exposure controls:
The dust concentration in the atmosphere must be kept on as low level as possible by means of properly designed technical tools (local venting, local exhaustion etc.).

Protection of respirator organs:

In case of nonobservance of specified concentration limits use respirator against dust.

Protection of eyes:

Protective glasses or face shield

Protection of hands:

Protective gloves

Protection of skin:

Suitable protective clothing, protective shoes

Further data including the general hygienic measures:

Do not eat, drink or smoke. After work, wash your hands with warm water and soap. Treat your skin with suitable repairation means.

SECTION 9: PHYSICAL AND CHEMICAL PROPERTIES

9.1 Information on basic physical and chemical properties:
Physical state (at 20C and 101,3 kPa): solid
Colour: light tan
Odour: odourless
Odour threshold: odourless
pH (at 20C) (1% solution): 10-11,5
Melting point/freezing point: not determined
Initial boiling point and boiling range: not determined

LOVOSA TS20

Flash point: not determined
 ignition temperature of the dust deposit 300 C, ignition temperature of suspended dust 330 C
 Flammability: not determined
 Explosive limits: upper - not determined, lower - 230 g/m³
 Vapour pressure: not determined
 Vapour density: not determined
 Relative density (at 20C): 1004 kg/m³
 Solubility in water: forms a gel that further dilution below 10% is dissolved into a viscous solution
 Partition coefficient (n-octanol/water): not determined
 Auto-ignition temperature: not determined
 Decomposition temperature: not determined
 Viscosity (at 20C): (1% solution) 10 – 20 mPa.s
 Explosive properties: non explosive
 Oxidising properties: is not classified as an oxidant

9.2 Other information:
 water content: max. 10 %

SECTION 10: STABILITY AND REACTIVITY

- 10.1 Reactivity:**
Under normal conditions, this mixture is a stable.
- 10.2 Chemical stability:**
Stable under recommended storage conditions.
- 10.3 Possibility of hazardous reactions:**
Not known.
- 10.4 Conditions to avoid:**
Heat, flames and sparks. Extremes of temperature and direct sunlight.
- 10.5 Incompatible materials:**
Not known.
- 10.6 Hazardous decomposition products:**
Not known.

SECTION 11: TOXICOLOGICAL INFORMATION

- 11.1 Information on toxicological effects:**
 - Acute toxicity:**
 LD50, oral: > 4 g/kg (rat)
 LD50 dermal: not given
 LD50 inhalation: not given
 - Skin corrosion/irritation:**
 Causes skin irritation
 - Serious eye damage/irritation:**
 Causes serious eye irritation.
 - Respiratory or skin sensitisation:**
 No data available
 - Carcinogenicity:**
 No data available
 - Germ cell mutagenicity:**
 No data available
 - Reproductive toxicity:**
 No data available

LOVOSA TS20

Specific target organ toxicity - single exposure:

No data available

Specific target organ toxicity - repeated exposure:

No data available

Aspiration hazard:

No data available

Other information:

See section 2 and 4.

SECTION 12: ECOLOGICAL INFORMATION

- 12.1 Toxicity:**
LC₅₀, 96 h., fish: not given
EC₅₀, 48 hod., daphnia: 5 mg/l
IC₅₀, 72 hod., algae: not given
- 12.2 Persistence and degradability:**
Not readily biodegradable.
- 12.3 Bioaccumulative potential:**
No data given. It is a compound well soluble in water. Bioaccumulation is not expected.
- 12.4 Mobility in soil:**
No data available
- 12.5 Results of PBT and vPvB assessment:**
Product is neither a PBT nor a vPvB substance
- 12.6 Other adverse effects:**
No data available

SECTION 13: Disposal considerations

- 13.1 Waste treatment methods:**
Dry way for removal.
- Ways of disposal of contaminated packaging:**
Taking back the emptied containers provided under the contract with the producer company EKO-KOM Prague. Contaminated packaging can be removed in a chemical incinerator equipped. Potential EU waste-code 16 03 03*.
- Other information:**
Substance including packaging, dispose in accordance with local regulations and laws in force.

SECTION 14: TRANSPORT INFORMATION

- 14.1 UN number:** does not
- 14.2 UN proper shipping name:** does not
- 14.3 Transport hazard class(es):** does not
- 14.4 Packing group:** does not
- 14.5 Environmental hazards:**
does not
- 14.6 Special precautions for user:**
does not

LOVOSA TS20

14.7 **Transport in bulk according to Annex II of MARPOL 73/78 and the IBC Code:**
not available

SECTION 15: REGULATORY INFORMATION

15.1 **Safety, health and environmental regulations/legislation specific for the substance or mixture:**
Regulation (EC) No 1907/2006 of the European Parliament and of the Council of 18 December 2006.
REGULATION (EC) No 1272/2008 OF THE EUROPEAN PARLIAMENT AND OF THE COUNCIL of 16
December 2008 on classification, labelling and packaging of substances and mixtures, amending and repealing
Directives 67/548/EEC and 1999/45/EC, and amending Regulation (EC) No 1907/2006.

15.2 **Chemical safety assessment:**
No data available.

SECTION 16: OTHER INFORMATION

In case of a revised safety data sheet, a clear indication of where changes have been made to the previous version of the safety data sheet:
First edition.

Key or legend to abbreviations and acronyms used in the safety data sheet:

Eye Irrit. 2 - irritating to eyes, category 2
Met. Corr. 1 - corrosive to metals, category 1
Skin Corr. 1A - skin corrosion, category 1A
Skin Corr. 1B - skin corrosion, category 1A
Skin Irrit. 2 - skin irritant, category 2
DNEL - Derived No Effect Level
PNEC - Predicted No Effect Concentration
PEL - Permissible exposure limit, long term (8h)
NPK-P - Highest permissible concentration on workplace
CLP - Regulation No 1272/2008/EC
REACH - Regulation No 1907/2006/EC
PBT - Persistent, bio-accumulative and toxic substance
vPvB - Very persistent and very bio-accumulative substance

Sources of key data used to compile the Safety Data Sheet:

Data from safety data sheets, literature, national and European legislation, database MedisAlarm and the experience of man.

List of hazard statements and precautionary statements:

H290 - May be corrosive to metals
H314 - Causes severe skin burns and eye damage
H315 - Causes skin irritation
H319 - Causes serious eye irritation
P280 - Wear protective gloves/protective clothing/eye protection/face protection.
P302+P352 - IF ON SKIN: Wash with plenty of water.
P305+P351+P338 - IF IN EYES: Rinse cautiously with water for several minutes. Remove contact lenses, if present and easy to do. Continue rinsing.
P332+P313 - If skin irritation occurs: Get medical advice/attention.
P337+P313 - If eye irritation persists: Get medical advice/attention.

Training advice :

According to MSDS.

Other information:

The information in this MSDS was obtained from sources, which we believe are reliable. However, the information is provided without any warranty, express or implied, regarding its correctness. The conditions or methods of handling, storage, use or disposal of the product are beyond our control and may be beyond our knowledge. For this and other reasons, we do not assume responsibility and expressly disclaim liability for loss, damage or expense arising out of or in any way connected with the handling, storage, use or disposal of the product. This MSDS was prepared and is to be used only for this product. If the product is used as a component in another product, this MSDS information may not be applicable.